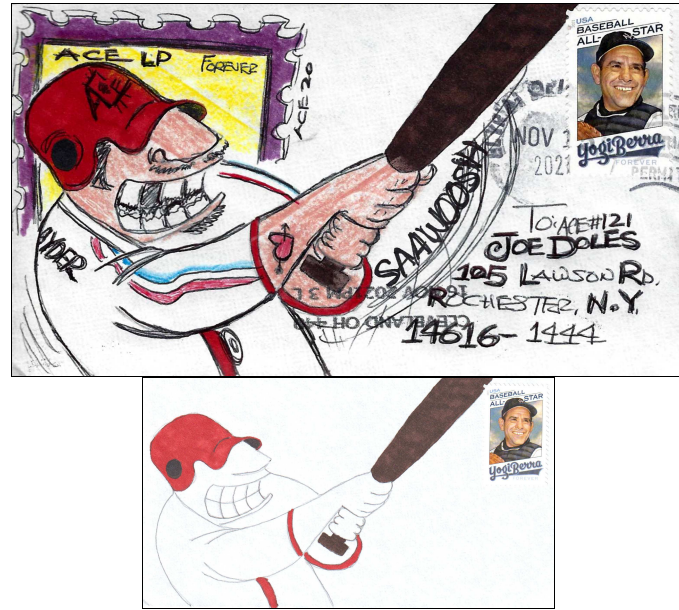


Collaborative Covers

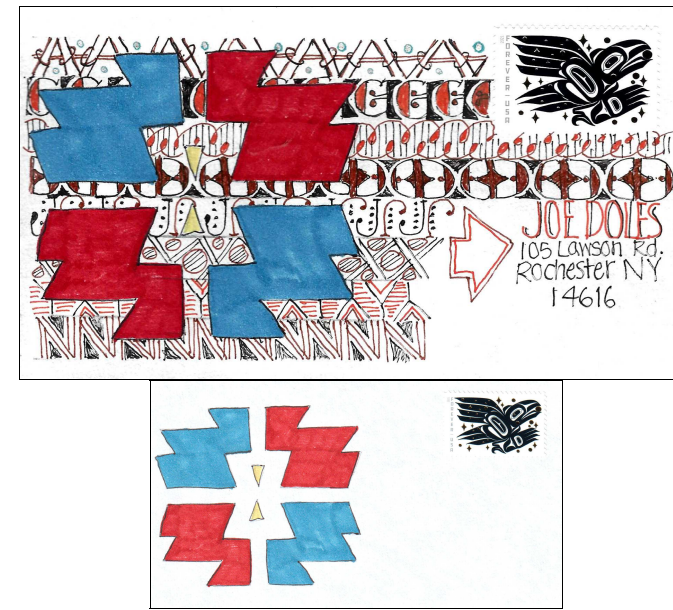
Final design by ACE 20, Charlie Delgado.



Final design by ACE 447, Bill Porter.



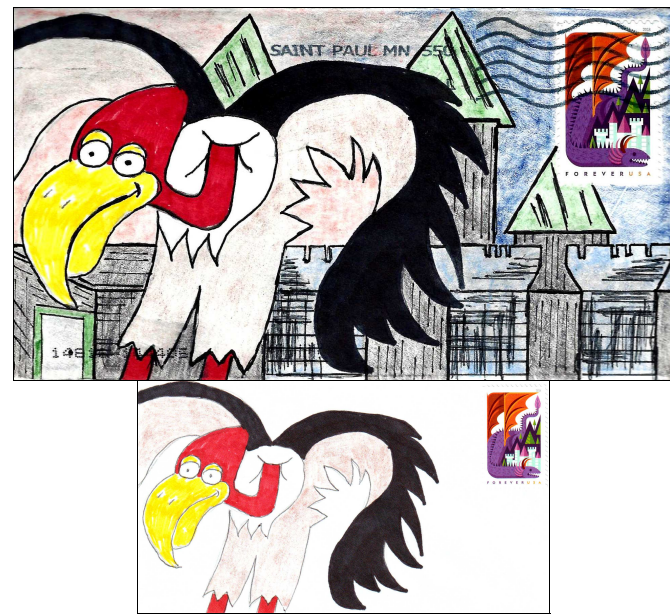
Final design by ACE 539, Janet Faight.



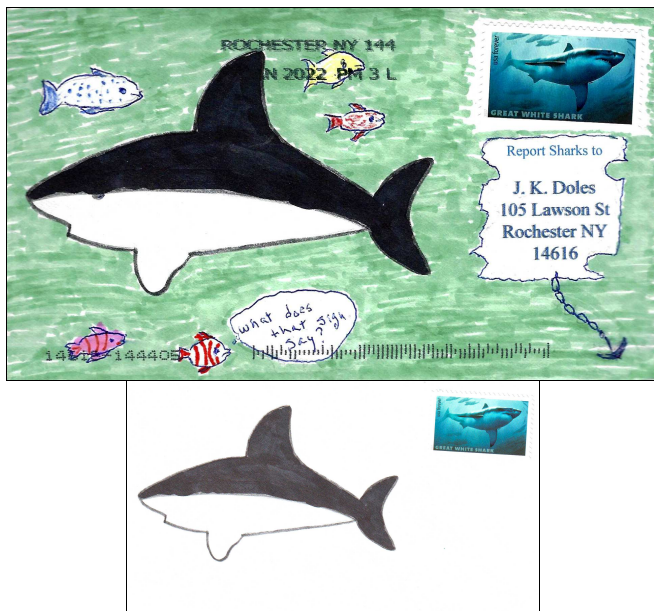
Final design by ACE 430, John Hughey.



Final design by ACE 554, Carolyn Marks.



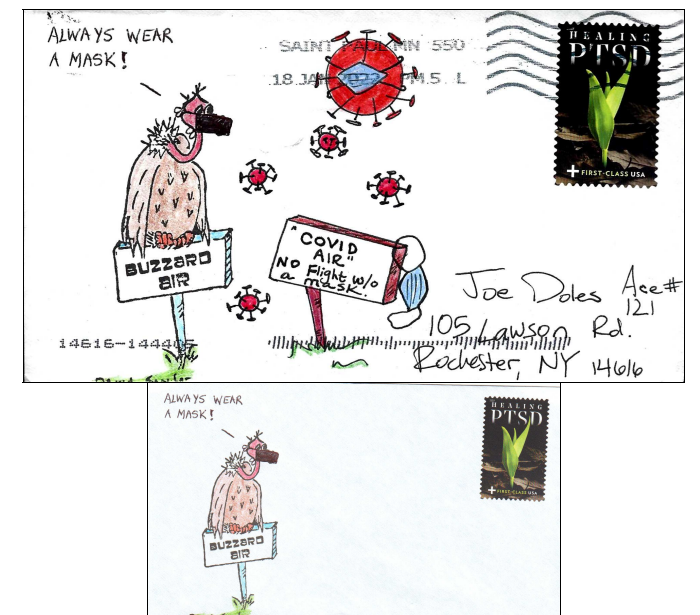
Final design by ACE 357, Ada Prill.



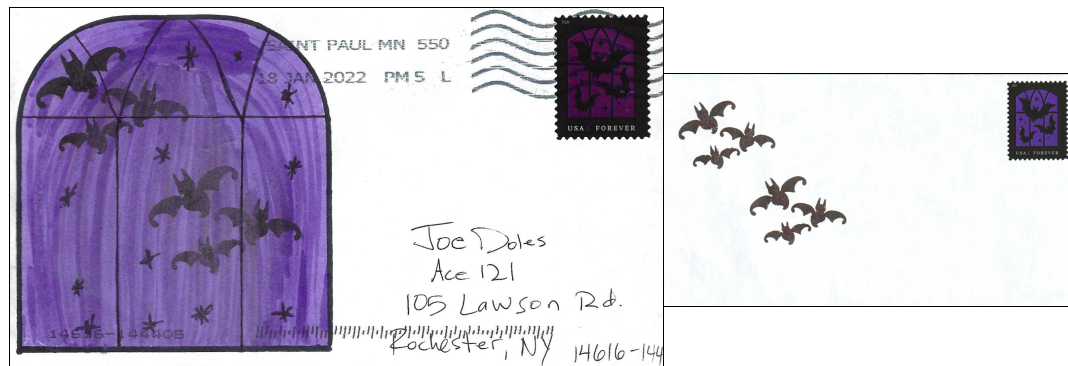
Final design by ACE 554, Carolyn Marks.



Final design by ACE 554, Carolyn Marks.



Final design by ACE 564, Katie Marks.



In the November issue of *From Cover to Cover*, Pam Frahm, ACE 494 announced her plans to send covers to other ACE's to make Colabra-covers. The original covers had been sent to Pam in New Zealand by Dave Snyder, ACE 487 with U.S. postage on each cover. Pam's idea was to have each member add their art work to Dave's and send it to your editor for publication in the newsletter to show that collaboration between members can result in some interesting covers. The ten covers shown here are just the start of what has been received so far from those that have participated. These covers will go to the ACE archives.

Final design by ACE 568, Richard Hoffner.

